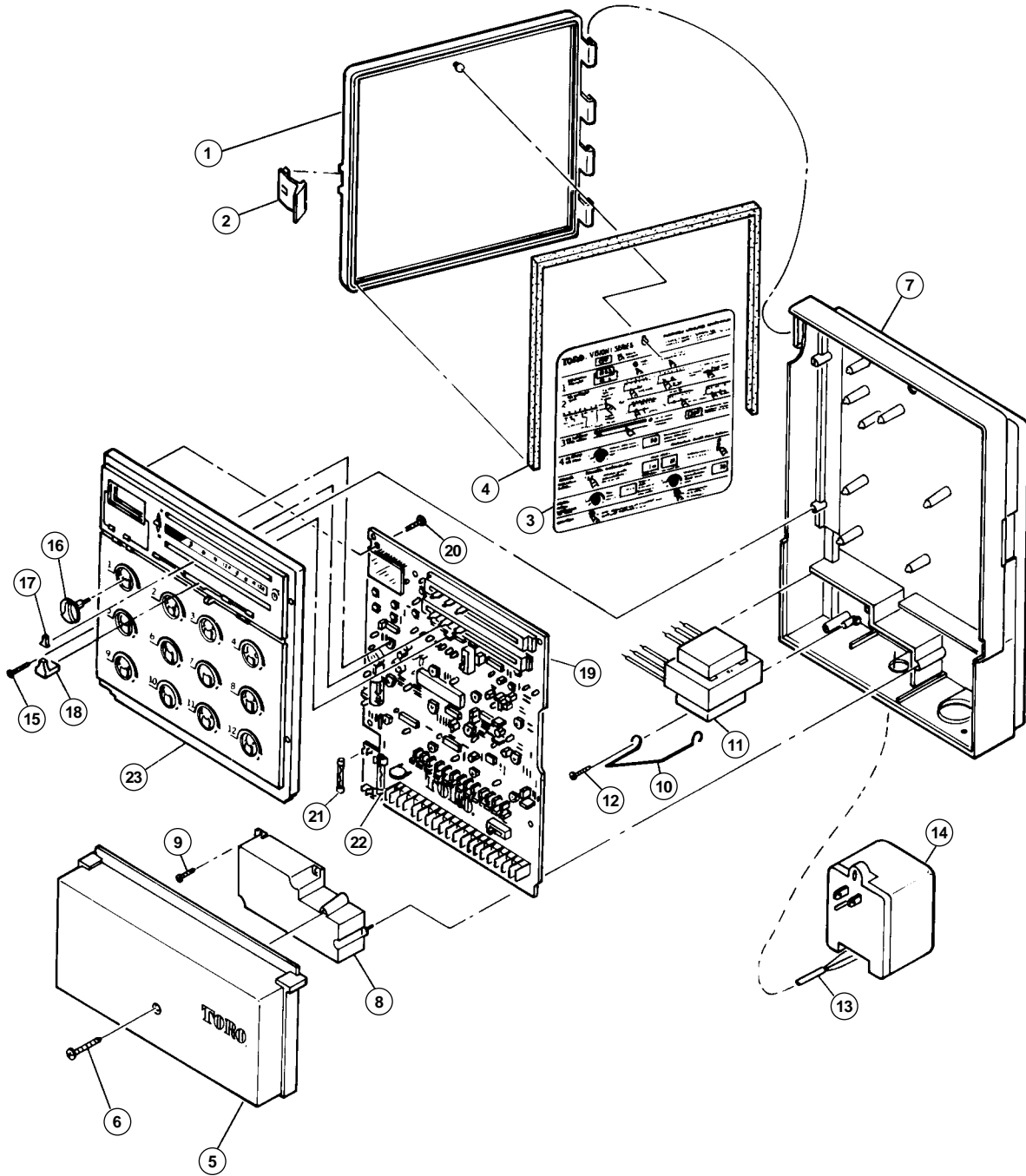


Vision II - Old-Style Plastic Cabinet



Item No.	Part No.	Description	Quantity Per Assy.
1	91-0052	Door, Plastic	1
2	91-0150	Latch, Door	1
3	91-0206	Card, Instruction	1
4	91-0416	Gasket, Door	1
5	91-0050	Cover, Terminal	1
6	363-1548	Screw, Tap, #6	1
7	91-0051	Housing, Controller	1
8	91-0053	Cover, Transformer	1
9	363-1355	Screw, Tap, #6	1
10	91-0228	Retainer, Transformer	1
11	35-9950	Transformer, 120 V a.c., 24 V a.c.,	1
11	35-9956	Transformer, 220/240 V a.c., 24 V a.c. (Export Models Only)	1
12	363-1355	Screw, Tap, #6	1
13	91-0188	Cable, Power Interconnect, Plug-In Models	1
14	35-9914	Transformer, Plug-In, 120 V a.c., 24 V a.c.	1
15	363-5052	Screw, 4-24 x 11/16"	5
16	91-0054	Knob, Station (One Per Station)	
17	89-0410	Knob, Slide Pot.	6
18	91-0056	Knob, Slide Pot.	1
19	-----	PCB Assy. (See Service Parts and Assemblies)	1
20	363-1355	Screw, Tap #6	4
21	360-0749	Fuse, 1.5 Amp	1
22	363-5026	Fuse, .75 Amp	1
23	-----	Plate, Front, 6, 9, and 12 Station (See Service Parts and Assemblies)	1
SERVICE PARTS AND ASSEMBLIES			
	363-5078	Barrier Strip, 4 P, Input Power, Export	
	89-7050	Kit, Accessory, Vision II	
	89-9393	Timing Mechanism, 6 Station (Includes Items 16-23)	
	89-9394	Timing Mechanism, 9 Station (Includes Items 16-23)	
	89-9395	Timing Mechanism, 12 Station (Includes Items 16-23)	
	91-1362	Timing Mechanism, 6 Station, Export (Includes Items 16-23)	
	91-1363	PCB Assy., 6 Station, Export (Includes Items 19, 21 & 22)	
	91-1364	Timing Mechanism, 9 Station, Export (Includes Items 16-23)	
	91-1365	PCB Assy., 9 Station, Export (Includes Items 19, 21 & 22)	
	89-9395	Timing Mechanism, 12 Station, Export (Includes Items 16-23)	
	91-1367	PCB Assy., 12 Station, Export (Includes Items 19, 21 & 22)	