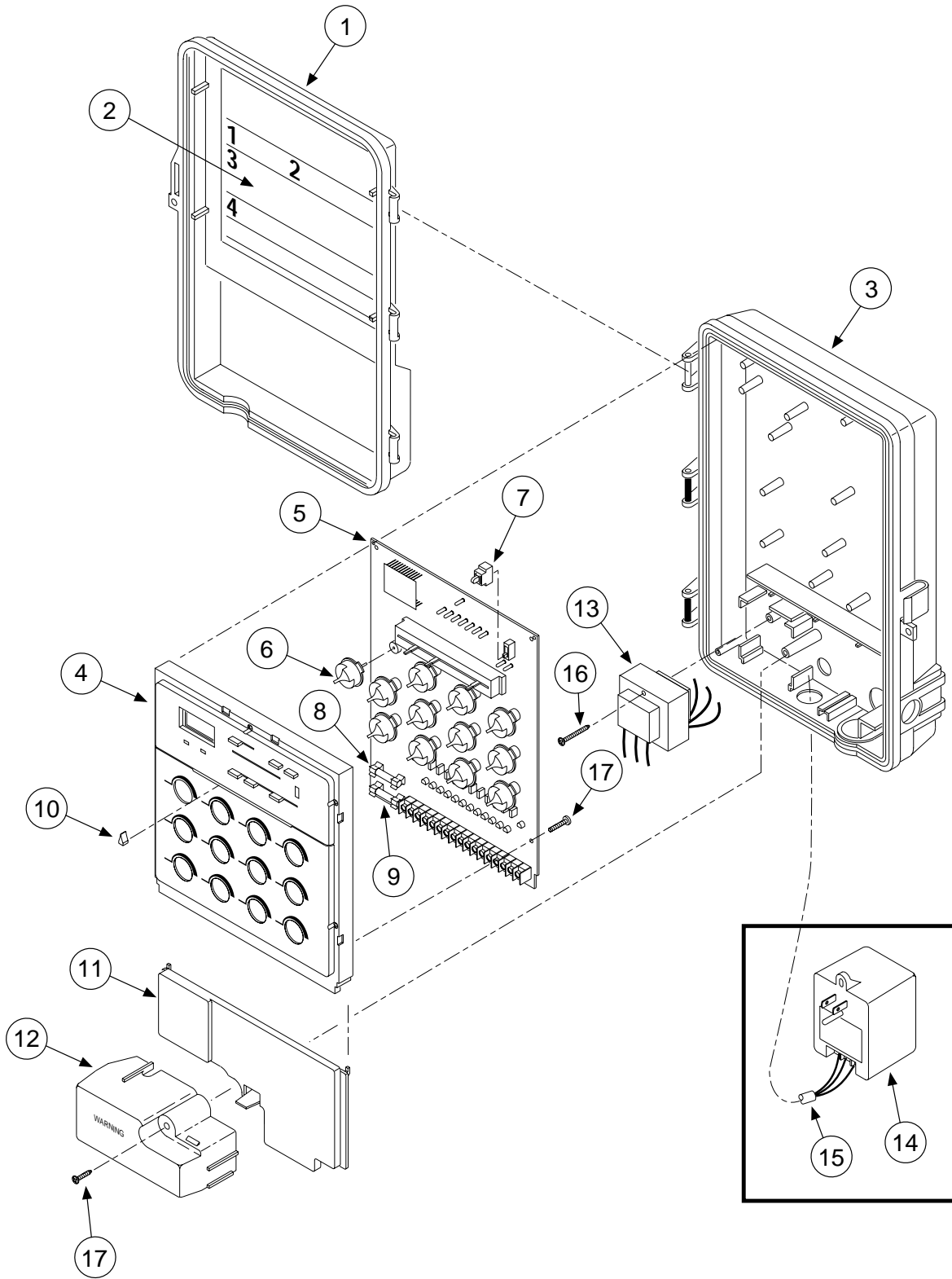


# Vision I - New-Style Plastic Cabinet



Item No.	Part No.	Description	Quantity Per Assy.
1	91-1326	Cover, Beige	1
2	91-0805	Decal, Instruction	1
3	91-1324	Housing, Beige	1
4	91-0971	Front Plate, 6 Station	1
4	91-1009	Front Plate, 9 Station	1
4	91-0969	Front Plate, 12 Station	1
5	-----	PCB Assy., 6 Station (See Service Parts and Assemblies)	1
5	-----	PCB Assy., 9 Station (See Service Parts and Assemblies)	1
5	-----	PCB Assy., 12 Station (See Service Parts and Assemblies)	1
6	35-9480	Knob, Station	1
7	-----	Extender, Slide Switch	1
8	363-2638	Fuse, .5 Amp	1
9	1-7088	Fuse, 1 Amp	1
10	35-9482	Knob, Slide Pot	1
11	91-1337	Cover, Terminal, Beige	1
12	91-1328	Cover, Transformer, Beige	1
13	35-9950	Transformer, 120 V a.c., 24 V a.c.,	1
13	35-9956	Transformer, 220/240 V a.c., 24 V a.c. (Export Models Only)	1
14	35-9914	Transformer, Plug-In, 120 V a.c., 24 V a.c.	1
15	91-0188	Cable, Power Interconnect, Plug-In Models	1
16	363-3195	Screw, Tap #6 x 1.5"	1
17	363-1355	Screw, Tap, #6	1
		<b>SERVICE PARTS AND ASSEMBLIES</b>	
	363-5078	Barrier Strip, 4 P, Input Power, Export	
	89-7049	Kit, Installation, Vision I	
	363-2926	Block, Terminal, 11 Position	
	91-1344	Timing Mechanism Assy., 6 Station (Includes Items 4–11)	
	91-1345	PCB Assy., 6 Station (Includes Items 5, 10 & 11)	
	91-1346	Timing Mechanism Assy., 9 Station (Includes Items 4–11)	
	91-1347	PCB Assy., 9 Station (Includes Items 5, 10 & 11)	
	91-1348	Timing Mechanism Assy., 12 Station (Includes Items 4–11)	
	91-1349	PCB Assy., 12 Station (Includes Items 5, 10 & 11)	
	91-1356	Timing Mechanism, 6 Station, Export (Includes Items 4–11)	
	91-1357	PCB Assy., 6 Station, Export (Includes Items 5, 10 & 11)	
	91-1358	Timing Mechanism, 9 Station, Export (Includes Items 4–11)	
	91-1359	PCB Assy., 9 Station, Export (Includes Items 5, 10 & 11)	
	91-1360	Timing Mechanism, 12 Station, Export (Includes Items 4–11)	
	91-1362	PCB Assy., 12 Station, Export (Includes Items 5, 10 & 11)	