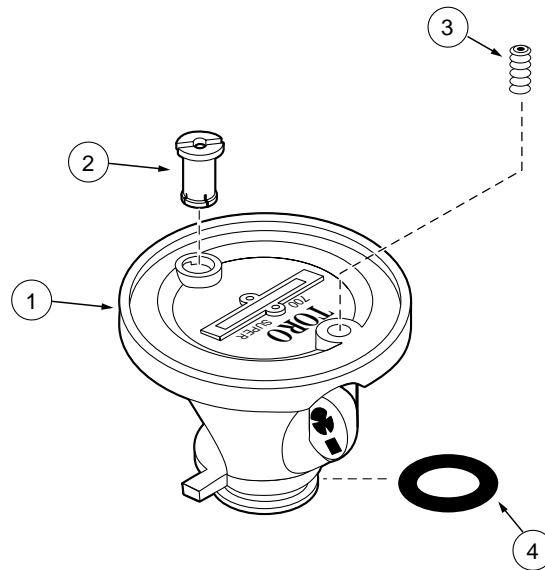


S700 Nozzles



Item No.	Part No.	Description	Quantity Per Assy.
STANDARD ANGLE			
1	*89-0893L	Kit, Nozzle, 1.5, Orange (Includes Items 2–4)	1
1	*89-0894L	Kit, Nozzle, 2.0, Red (Includes Items 2–4)	1
1	*89-0895L	Kit, Nozzle, 3.0, Black (Includes Items 2–4)	1
1	*89-0896L	Kit, Nozzle, 4.5, Blue (Includes Items 2–4)	1
1	*89-0897L	Kit, Nozzle, 6.0, Green (Includes Items 2–4)	1
1	*89-0898L	Kit, Nozzle, 7.5, Tan (Includes Items 2–4)	1
1	*89-0899L	Kit, Nozzle, 9.0, Gray (Includes Items 2–4)	1
2	89-3003	Lock, Nozzle Pin, Standard Angle, Black	1
3	360-0223	Screw, Set, Half-dog, 6-32	1
4	360-0494	O-Ring, .070" x .426" x .566"	1
LOW ANGLE			
1	*89-1093L	Kit, Nozzle, 1.5, Orange (Includes Items 2–4)	1
1	*89-1095L	Kit, Nozzle, 2.0, Red (Includes Items 2–4)	1
1	*89-1097L	Kit, Nozzle, 3.0, Black (Includes Items 2–4)	1
1	*89-1099L	Kit, Nozzle, 4.5, Blue (Includes Items 2–4)	1
1	*89-1101L	Kit, Nozzle, 6.0, Green (Includes Items 2–4)	1
1	*89-1103L	Kit, Nozzle, 7.5, Tan (Includes Items 2–4)	1
1	*89-1105L	Kit, Nozzle, 9.0, Gray (Includes Items 2–4)	1
2	89-3748	Lock, Nozzle Pin, Low Angle, Gray	1
3	360-0223	Screw, Set, Half-dog, 6-32	1
4	360-0494	O-Ring, .070" x .426" x .566"	1
FLAT ANGLE			
1	*89-1936L	Kit, Nozzle, 1.5, Orange (Includes Items 2–4)	1
1	*89-1938L	Kit, Nozzle, 2.0, Red (Includes Items 2–4)	1
1	*89-1940L	Kit, Nozzle, 3.0, Black (Includes Items 2–4)	1
1	*89-1942L	Kit, Nozzle, 4.5, Blue (Includes Items 2–4)	1
1	*89-1944L	Kit, Nozzle, 6.0, Green (Includes Items 2–4)	1
1	*89-1946L	Kit, Nozzle, 7.5, Tan (Includes Items 2–4)	1
1	*89-1948L	Kit, Nozzle, 9.0, Gray (Includes Items 2–4)	1
2	89-3749	Lock, Nozzle Pin, Flat Angle, Beige	1
3	363-3214	Screw, Set, Half-dog, 5-40 x .375 (Black)	1
4	360-0494	O-Ring, .070" x .426" x .566"	1
* Order Through Finished Goods Distribution System—Minneapolis			